

CHOOSE PA DAIRY

goodness that matters

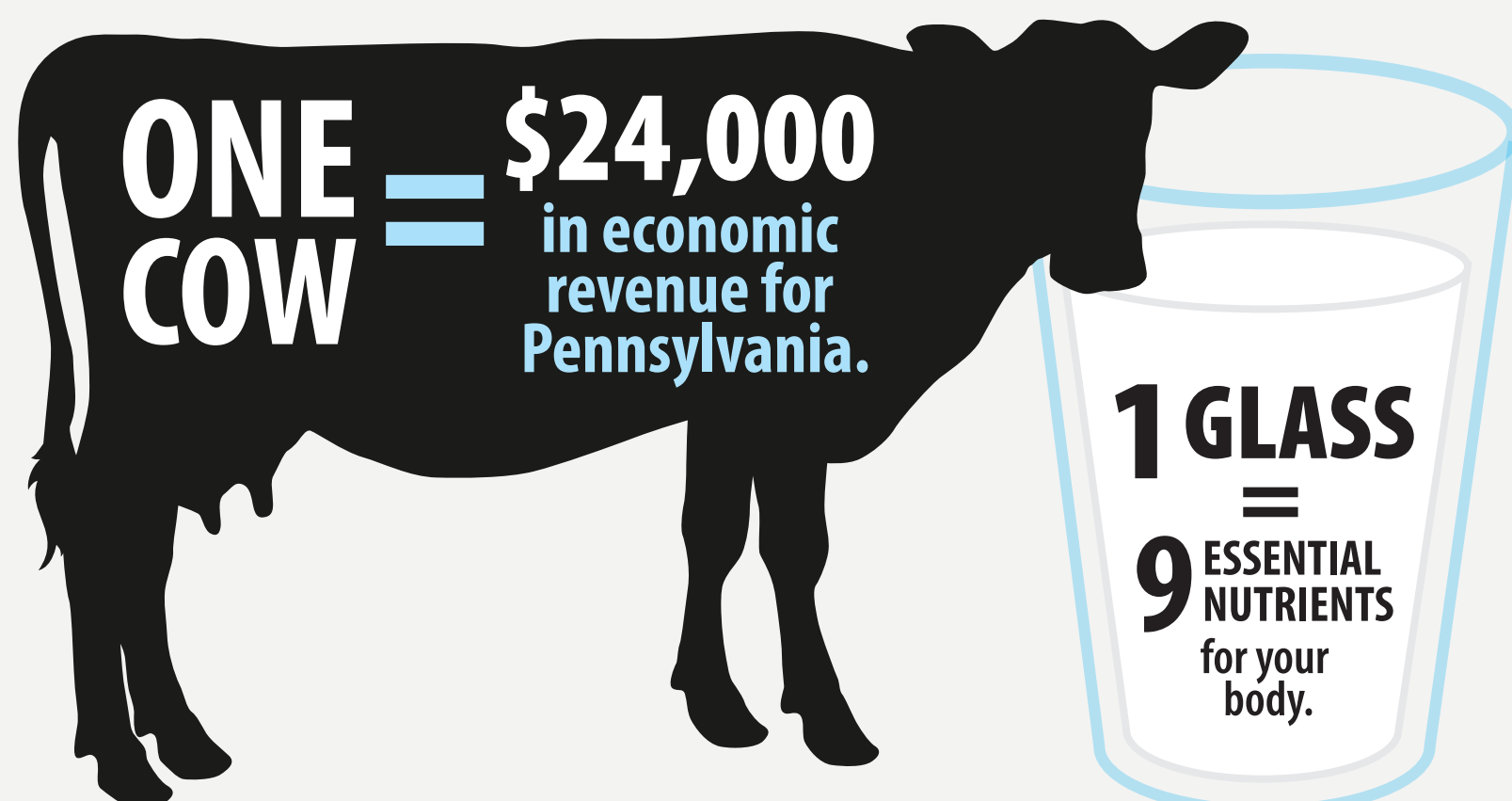


The Copenhaver family,
Lebanon County

Pennsylvania's dairy farm families and related processing companies fuel **strong bodies** and **strong communities**, providing an abundant supply of rich, wholesome dairy products found locally 52 weeks out of the year.



Choosing PA Dairy is as easy as looking for the **PA Preferred® logo** or for the Pennsylvania **plant code 42** to ensure you are buying local milk at the grocery store and other places.



Pennsylvania's dairy farms are the backbone of rural communities, providing a local source of fresh, wholesome milk, valuable economic revenue, good jobs, and open spaces for our natural resources.

Learn more about PA milk and how to find it at www.choosepadairy.com