



## Join Us As a Catalyst for Pennsylvania's Dairy Industry

The Center for Dairy Excellence is focused on serving the Pennsylvania dairy industry. Our role is to foster collaboration and opportunity across all sectors, while helping individual dairy farm families thrive in the Commonwealth. Even with the current challenges that exist, we believe tremendous opportunities exist both for our industry and for the individual dairy farm businesses that make up the fabric of Pennsylvania's rural communities.

The Center continues to make a real difference across Pennsylvania's dairy industry and on thousands of farms and industry related businesses. It is a shining example of a public:private partnership, with funds from the Pennsylvania Department of Agriculture serving as seed money to support efforts to strengthen both individual farms and the industry. When producers are looking to their future, we can bring industry consultants around the table. When dairy processors and companies look to their future, we serve as a resource in helping them find opportunities within Pennsylvania.

While 70 percent of our funds come from the Pennsylvania Department of Agriculture Ag Excellence initiative, we rely on the other 30 percent to come from the Allies for Advancement program, competitive grants and other sources. Organizations providing financial support to the Center through the Allies for Advancement Program demonstrate their interest in collaborating to ensure dairy remains strong and growing in Pennsylvania.

Become an Ally today! Join the Center for Dairy Excellence in empowering Pennsylvania's dairy industry and its individual dairy farm families.

**Empowering People**

**Creating Partnerships**

**Coordinating Resources  
to Increase Profitability**

**It's Our Passion  
and Purpose**

### Meet the Center Board and Staff



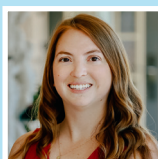
*The Center for Dairy Excellence Board of Directors represents a cross section of the industry, bringing together insight to strengthen the Center's efforts. Serving on the board in 2022-23 was Phoebe Bitler, Amanda Biddle, Tony Brubaker, Diane Hartman, Michael Hosterman, Andrea Karns, Dr. Jody Kull, Representative Clinton Owlett, Steve Paxton, Amanda Rife, Katie Sattazahn, Kirk Sattazahn, Jessica Slaymaker, Chuck Turner, Amber Yutzy, Caroline Zimmerman, and Secretary Russell Redding.*



**Jayne Sebright**  
Executive Director



**Melissa Anderson**  
Dairy Programs and  
Operations Manager



**Emily Barge**  
Communications and  
Marketing Manager



**Allen Hess**  
Customer Relations  
Specialist



**Karen Purnell**  
Accounting Manager



**Michelle Shearer**  
Workforce Development  
Manager



**Brittany Snyder**  
Dairy Education  
Program Manager

### Why invest in the Center for Dairy Excellence's Allies for Advancement Program?

It demonstrates your organization's commitment to Pennsylvania's dairy industry and the farm businesses that are part of it. Allies funds complement public dollars to focus on resources that bolster the statewide dairy industry and provide direct support to individual dairy farm families.

Specifically, the Center for Dairy Excellence:

1. Offers Resources and Support to Facilitate Better Business Decision Making on the Farm.
2. Facilitates Industry Collaboration to Support Reinvestment, Growth and Transformation Across All Segments.
3. Shapes Vision and Encourages Discussion to Challenge Industry and Individual Mindsets.
4. Champions Dairy With Key Leaders and Decision Makers within the Commonwealth.



*Farm Credit is committed to supporting agriculture and our rural communities. Critical to that mission are our industry partnerships with organizations such as the Center for Dairy Excellence, as they strive to grow and improve the profitability of Pennsylvania's dairy industry. As an Ally for Advancement, Farm Credit can help the Center make an impact in the lives of individual dairy farm families, dairy support businesses and our industry, as a whole.*

—Tom Truitt, Horizon Farm Credit



## CENTER FOR DairyEXCELLENCE

### Allies Benefits Available

**Friend of the Center for Dairy Excellence** - Your organization receives recognition on our website and at events, as well as the ability to receive the CDE e-bulletin, and monthly *Markets & Management Update*.

**Bronze Level** - You have the opportunity to have Center staff join your team for meetings, organizational functions, or customer visits to provide insight on dairy resources and risk management planning. Discounts to the Center's educational events (excluding the Dairy Summit) are also available to Allies at or above the Bronze level.

**Silver Level** - Your logos can be placed on a Center electronic communication once a month, along with all other benefits mentioned.

**Gold Level** - You will receive all opportunities available, as well as the ability to showcase a program or producer's best management practices of your choice in one of the Center's electronic communications.

**Make a contribution online:**

Visit [centerfordairyexcellence.org/allies](http://centerfordairyexcellence.org/allies)

**For more information, contact us at:**

Center for Dairy Excellence  
2301 North Cameron Street  
Harrisburg, PA 17110

Phone: 717-346-0849

Email: [info@centerfordairyexcellence.org](mailto:info@centerfordairyexcellence.org)

[www.centerfordairyexcellence.org](http://www.centerfordairyexcellence.org)



SCAN ME



### The Center's Reach By The Numbers

Individual Farms with Direct Support  
through Multiple Grant Opportunities

**3,500** FARMS

Students through Educational Programs,  
Scholarships and Internships Offered by Foundation

MORE THAN  
**1.7** MILLION SINCE 2010

Producers, Industry Leaders and Others through Market Information  
and Resources Provided at Meetings and through Columns

MORE THAN  
**124,000** ANNUALLY

Industry Leaders, Public Officials and Other Stakeholders through  
Individual Conversations, Meetings, and Other Outreach

**COUNTLESS**

### COMMITMENT FORM

Company Name: \_\_\_\_\_

Contact Person: \_\_\_\_\_

Phone: \_\_\_\_\_ Fax: \_\_\_\_\_

\_\_\_\_\_  
Check here to verify you have complete authority to commit funds  
on behalf of this organization to the Center.

Address: \_\_\_\_\_

City: \_\_\_\_\_ State: \_\_\_\_\_ Zip: \_\_\_\_\_

Email: \_\_\_\_\_

Website: \_\_\_\_\_

Description of Organization's Products or Services (30 words or less):  
\_\_\_\_\_  
\_\_\_\_\_  
\_\_\_\_\_

#### ALLIES LEVEL OF COMMITMENT

We will commit \$ \_\_\_\_\_

\_\_\_\_ Gold (\$10,000 or more) \_\_\_\_ Bronze (\$1,000 - \$4,999)

\_\_\_\_ Silver (\$5,000 - \$9,999) \_\_\_\_ Friend of the Center for Dairy Excellence (\$500 - \$999)

#### AUTHORIZATION

Name and Title of Authorizing Agent: \_\_\_\_\_

Signature of Authorizing Agent: \_\_\_\_\_

Method of Payment:

\_\_\_\_ Check or Money Order Enclosed \_\_\_\_ Please Invoice Us

\_\_\_\_ We would like to pay in installments. (Indicate date of first installment: ) \_\_\_\_/\_\_\_\_/\_\_\_\_

\_\_\_\_ Monthly Installments \_\_\_\_ Quarterly Installments

\_\_\_\_ Semi-Annual Installments \_\_\_\_ We would like to pay online

Return Commitment Form to:

Center for Dairy Excellence  
2301 North Cameron Street • Harrisburg, PA 17110  
Fax: 717-705-2342 • Email: [info@centerfordairyexcellence.org](mailto:info@centerfordairyexcellence.org)

\* This description may be used in promotional pieces and collateral about the Allies program.