



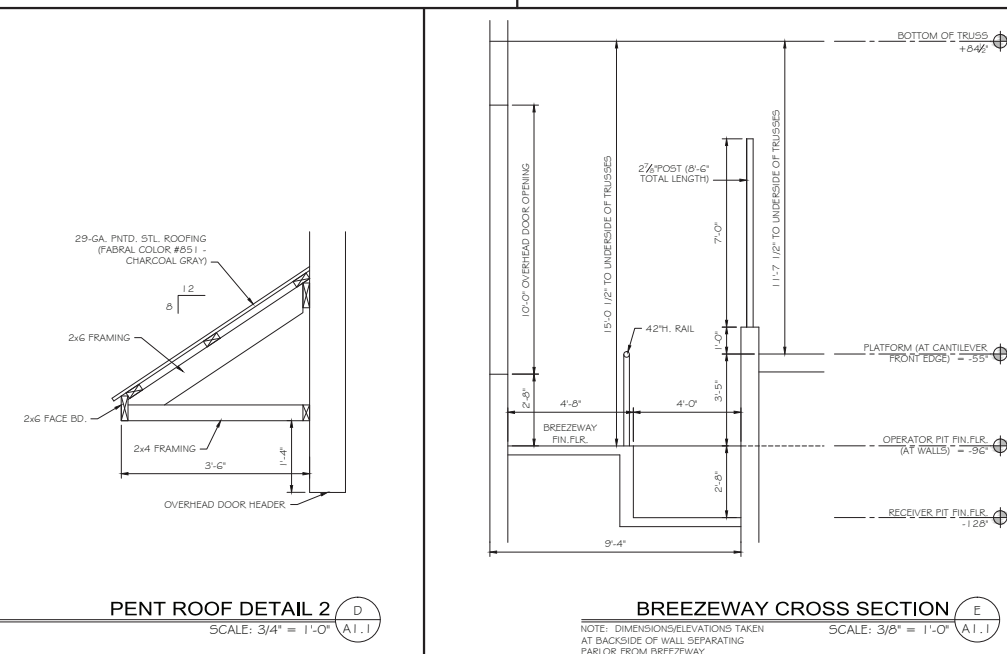
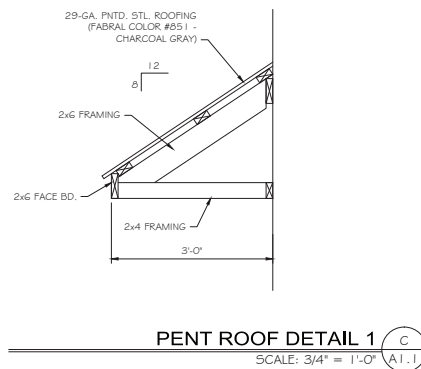
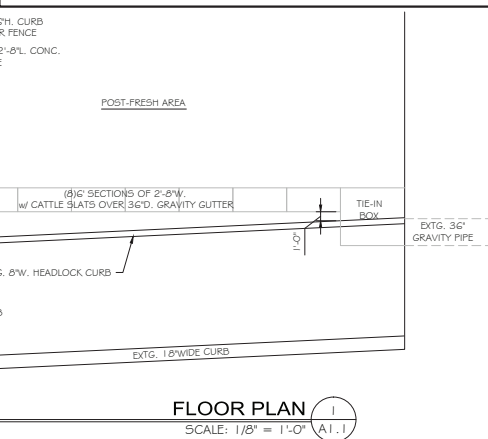
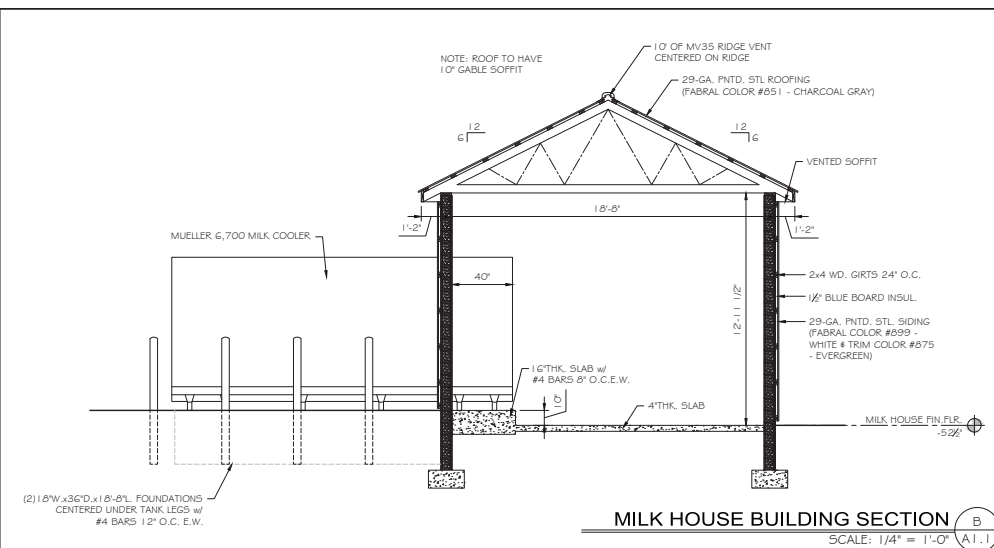
## Resources and Contact Information...continued



WHITE HORSE CONSTRUCTION  
5080 LEIKE ROAD  
PARKESBURG, PA 19365  
PHONE: 610-593-5559  
FAX: 610-593-6077  
whitehorse@epix.net

This drawing and its contents and information is property of White Horse Construction Inc. and is not to be reproduced, copied, lent or otherwise disposed of without written permission of White Horse Construction Inc. nor to be used for any other purpose than for that which is furnished.

SEAL:



# RENOVATION FOR MEADOW SPRINGS FARM

340 MEADOW VALLEY ROAD, LITITZ, PA 17543  
EPHRATA TOWNSHIP, LANCASTER COUNTY

REVISIONS		
	DATE	
A	4/17/12	PLAN UPDATES + SECTION
B	4/30/12	PLAN + SECTION UPDATES
C	5/08/12	PLAN + SECTION UPDATES
D	5/10/12	PLAN + SECTION UPDATES
E	5/17/12	PLAN + SECTION UPDATES
F	6/05/12	PLAN + SECTION UPDATES PER J.Z.
G		
H		
I		
J		
K		
L		
M		
N		

DRAWN BY: NLM	DATE: 3/27/12
CHECKED BY: -	SCALE: AS NOTED

NUMBER:
SHEET NAME FLOOR PLAN
SHEET NUMBER

## A1.1

PRELIMINARY DRAWING

## Resources and Contact Information...continued

### Employee Interview Questions:

#### Meadow Spring Farm Employment Evaluation Tool

1. What factors **motivate** you to working at Meadow Spring Farm?
2. In what ways would you like to be **recognized** for your efforts at work?  
(Monetary/benefits, verbal, other)
3. How satisfied are you with the overall spirit of **teamwork** with the working environment? How could people improve the teamwork?  
(Meeting structure/frequency, everyone vs. smaller area of focus team)
4. How satisfied are you with the quality and frequency of our **training/team meeting programs**?
5. How satisfied are you with the **safety** of your work environment? Do you have suggestions for any improvements?
6. Please share any suggestions you may have on how to improve work **scheduling**?
7. What do you particularly appreciate about your work?
8. What possible changes could you suggest to improve you work experience?

## Resources and Contact Information...continued

### Video Links:

Legislator Video at the Farm:

<http://www.repdenlinger.com/youtubevideo.aspx>

Lancaster Farming Article, Summer 2013 Open House Video:

<http://www.lancasterfarming.com/-Dairy-Farm-Upgrade-Paves-Way-for-Family-Transition-#.U17LclcvCTI>

Seth Bollinger's Videos:

<http://www.youtube.com/watch?v=BSYgS2VrDQk>

[http://www.youtube.com/watch?annotation\\_id=channel%3A52fdc646-0-21f5-96c120cf3010e841&feature=iv&src\\_vid=BSYgS2VrDQk&v=INisoEJ5UAg](http://www.youtube.com/watch?annotation_id=channel%3A52fdc646-0-21f5-96c120cf3010e841&feature=iv&src_vid=BSYgS2VrDQk&v=INisoEJ5UAg)

### Contacts:

Please call the Center for Dairy Excellence to make contact with any of these individuals to learn more about their role in successfully completing this project.

Jeff Ainslie, Red Barn Consulting

Chris Stoltzfus, White Horse Construction

Amos Fisher, Fisher & Thompson

Dr. Barton, Veterinarian and Human Resources Consultant

Joe Zook, Dairy Industry Consultant

Brian Black, Estate Attorney

Mike Peachy, Acuity Advisors and CPAs



CENTER FOR  
**Dairy**EXCELLENCE

**To learn more, contact the Center for Dairy Excellence**

**2301 North Cameron St., Harrisburg, PA 17110**

**Phone: 717-346-0849 ♦ Fax: 717-705-2342**

**[info@centerfordairyexcellence.org](mailto:info@centerfordairyexcellence.org) ♦ [www.centerfordairyexcellence.org](http://www.centerfordairyexcellence.org)**

**Follow Us on [Facebook](#)**

™FutureCow is a trademark of Alpha Technology USA Corporation.