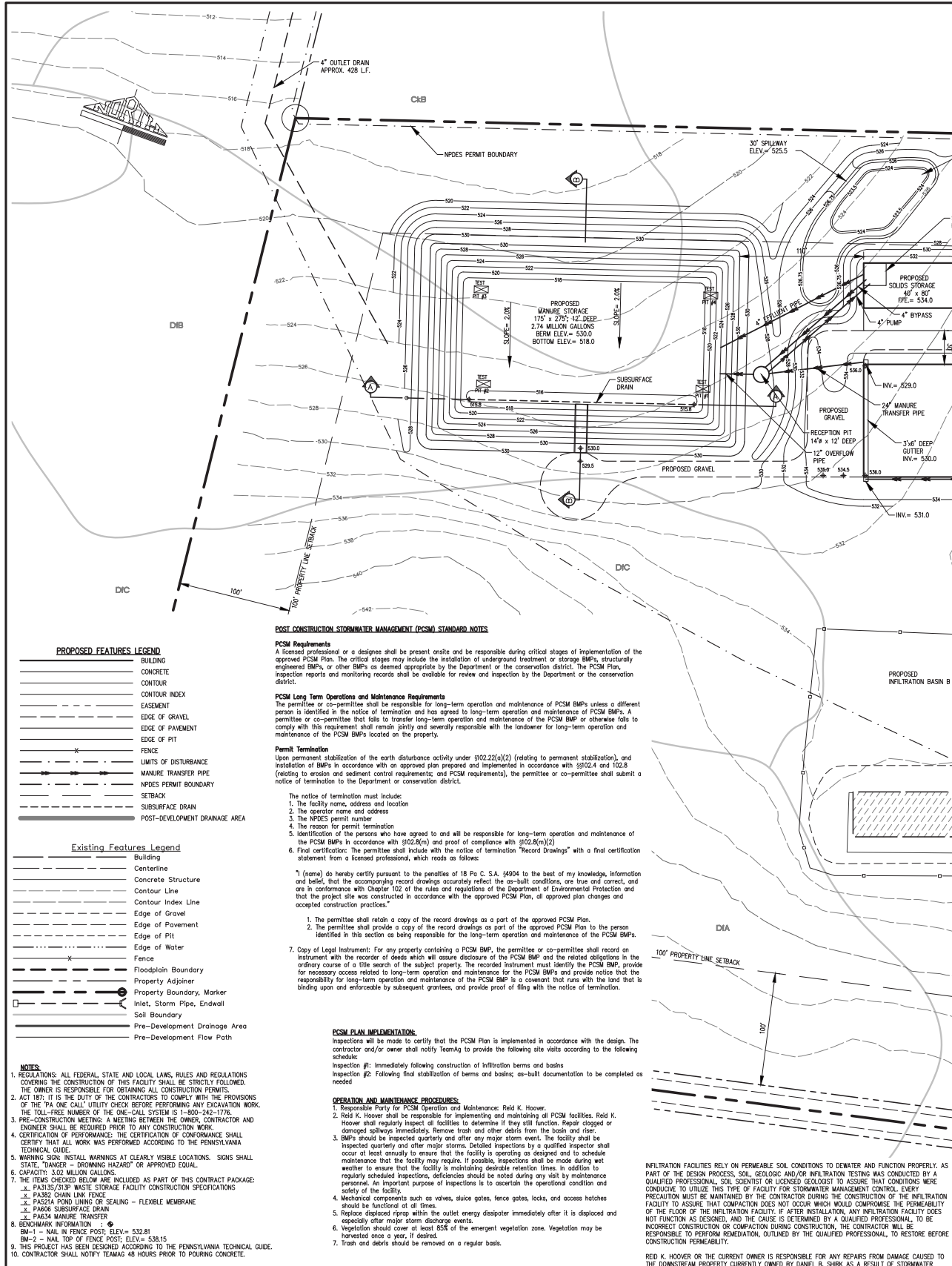
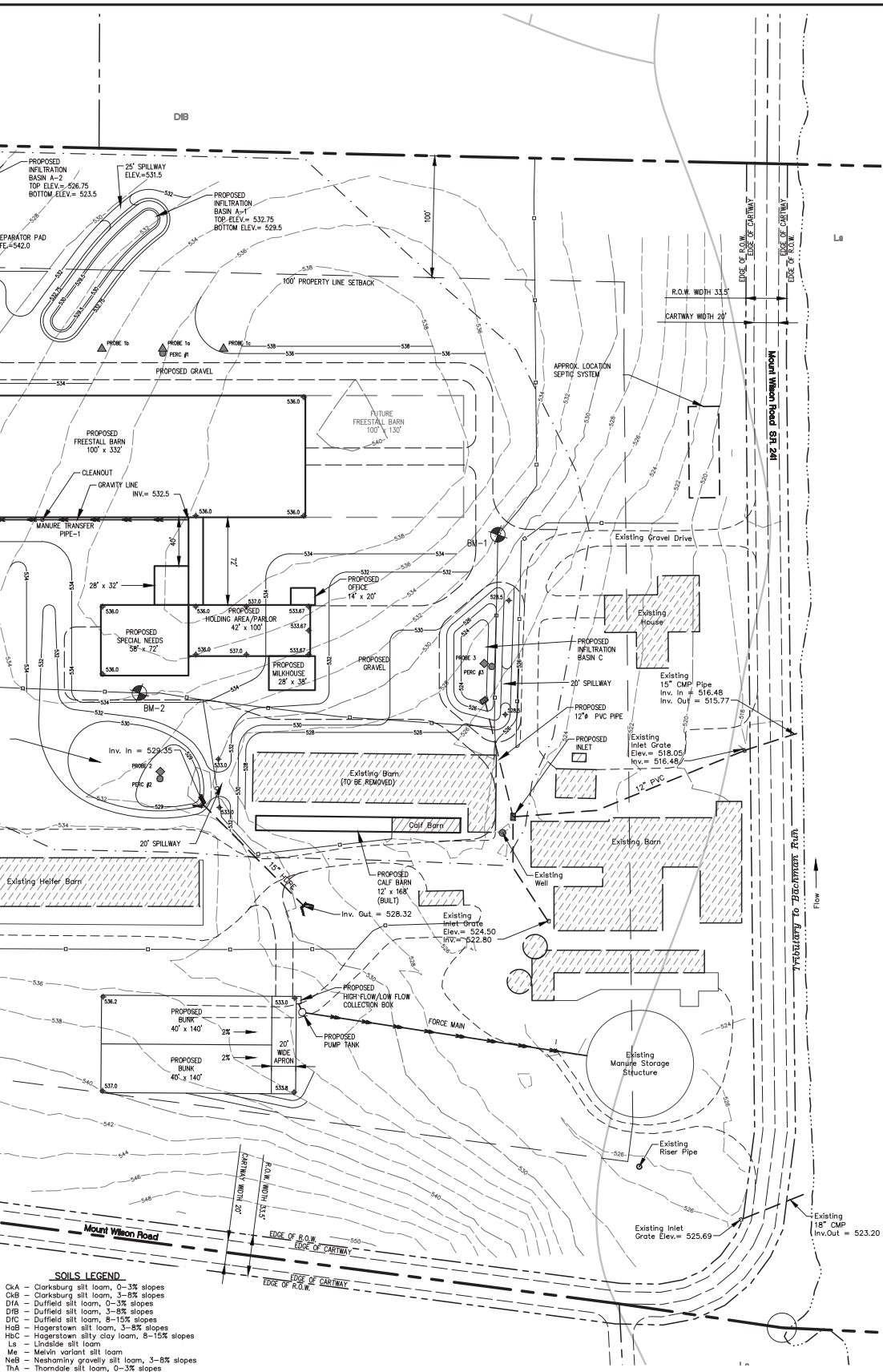


# Resources and Contact Information

## Blueprints:



# Resources and Contact Information...continued



PROJECT MANAGER		DATE		REVISION	
RANDALL L. HOOVER		FEB. 15, 2011	MAC	PER COUNTY DATED 1/27/2011 & LCD DATED 2/2/2011	
DESIGN BY : RH		MAR. 17, 2011	MAC	PER COUNTY DATED 2/22/2011	
DRAWN BY : JPD		APR. 1, 2011	RLH	PER COUNTY DATED 3/28/2011	
DATE : DECEMBER 28, 2010		MAY 5, 2011	JPD	PER PADEP WQM PERMIT REVIEW	
PROJECT NO.: 2656-09-1					

<p>100 LAKE STREET EDINBURG, PA 17032 PHONE: 717-721-6795 FAX: 717-721-9275 WWW.TeamAg@TeamAgInc.com</p>		<p>SEAL</p> <p>0' 50' 100' 150'</p> <p>1" = 50'</p>
<p>PROJECT TITLE: <b>PROPOSED DAIRY EXPANSION</b> SOUTH ANNVILLE TOWNSHIP, LEBANON COUNTY, PA</p> <p>CLIENT: <b>REID K. HOOVER</b> 400 MOUNT WILSON ROAD LEBANON, PA 17042 717-867-2648</p>		
<p>PCSM PLAN</p> <p>DRAWING : 4 OF 7</p>		

## **Resources and Contact Information...continued**

### Articles:

*Dairy Spot, The Mid-Atlantic Spot for Dairy*

<http://old.dairyspot.com/brook-corner-holsteins>

### Contacts:

Please call the Center for Dairy Excellence to make contact with any of these individuals or organizations to learn more about their role in successfully completing this project.

Randy Hoover, Team Ag

Lee Wenger, Pennsylvania Farm Bureau





CENTER FOR  
**Dairy**EXCELLENCE

**To learn more, contact the Center for Dairy Excellence**

**2301 North Cameron St., Harrisburg, PA 17110**

**Phone: 717-346-0849 ♦ Fax: 717-705-2342**

**[info@centerfordairyexcellence.org](mailto:info@centerfordairyexcellence.org) ♦ [www.centerfordairyexcellence.org](http://www.centerfordairyexcellence.org)**

**Follow Us on [Facebook](#)**