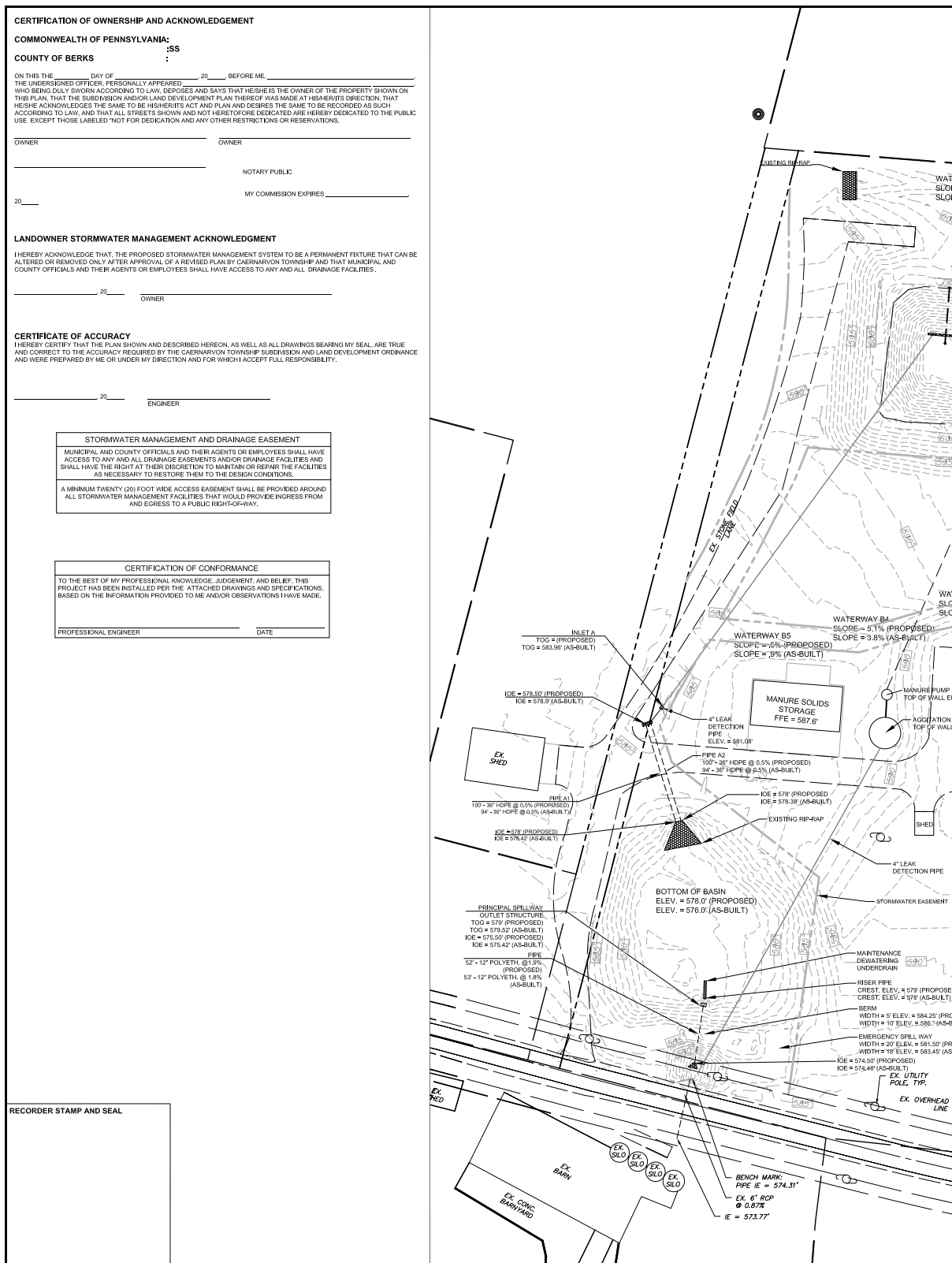
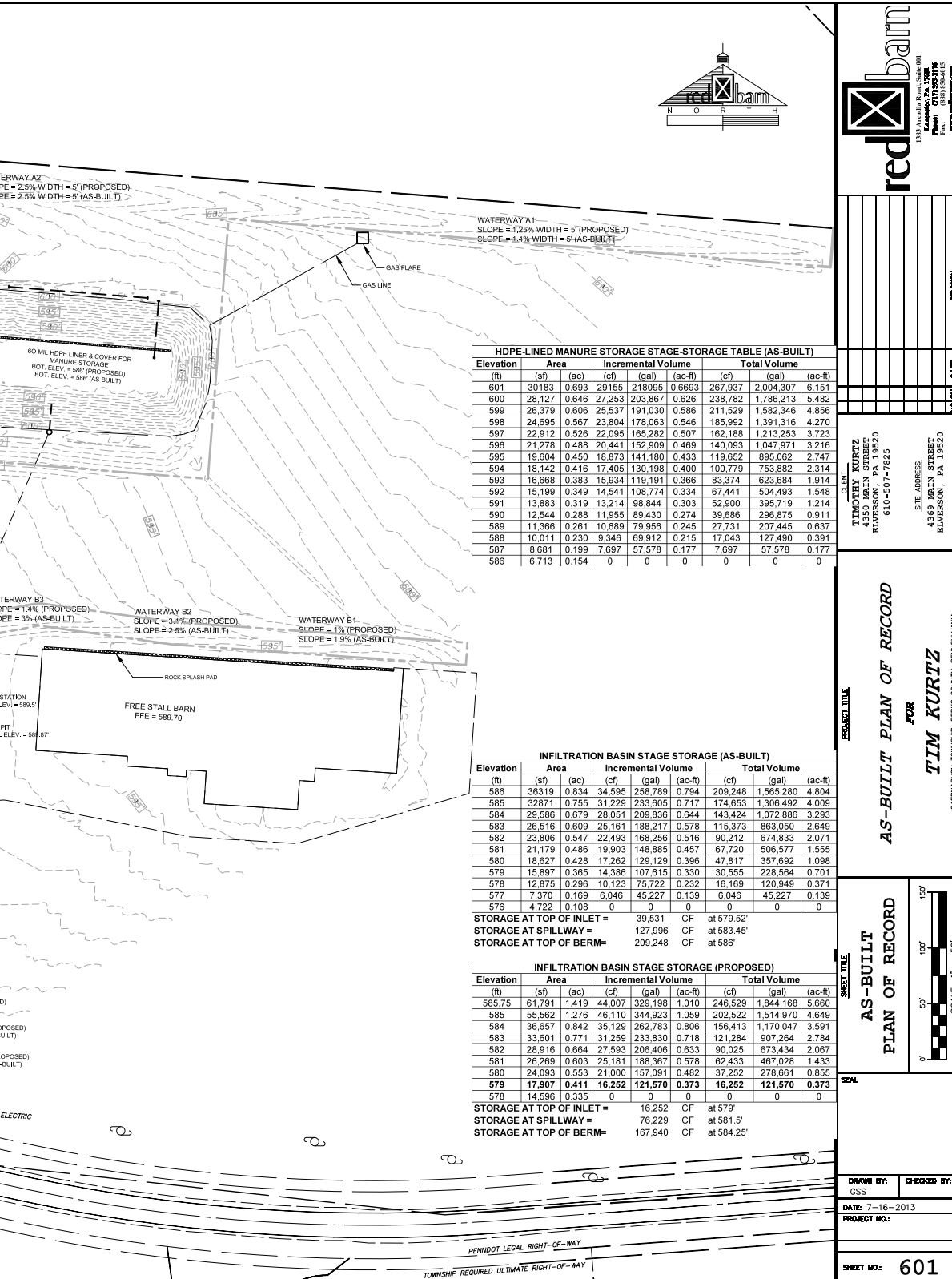


# Resources and Contact Information

## Blueprints



# Resources and Contact Information...continued



## Resources and Contact Information...continued

Family Video:

Video production that aired on Berks Cable TV

[http://www.bctv.org/special\\_reports/economy/economic-development-in-greater-reading/html\\_5919014a-66f3-53a1-b880-f087eafdf9cc.html](http://www.bctv.org/special_reports/economy/economic-development-in-greater-reading/html_5919014a-66f3-53a1-b880-f087eafdf9cc.html)

Farm Facebook Page:

<https://www.facebook.com/KurtlandFarm>

## Resources and Contact Information...continued

### Articles:

*Bloomberg Business Week*

[http://investing.businessweek.com/research/markets/news/article.asp?docKey=600-201312310649KRTRIB\\_BUSNEWS\\_61224\\_16828-1&page=2](http://investing.businessweek.com/research/markets/news/article.asp?docKey=600-201312310649KRTRIB_BUSNEWS_61224_16828-1&page=2)

*The Reading Eagle* – feature story on Kurtz Family

<http://berkscountry.readingeagle.com/barn-of-the-future-helps-save-chesapeake-bay/>

*New York Times* article on robotic milking, with quotes from Tim Kurtz

[http://www.nytimes.com/2014/04/23/nyregion/with-farm-robotics-the-cows-decide-when-its-milking-time.html?\\_r=1](http://www.nytimes.com/2014/04/23/nyregion/with-farm-robotics-the-cows-decide-when-its-milking-time.html?_r=1)

### Contacts:

Please call the Center for Dairy Excellence to make contact with any of these individuals to learn more about their role in successfully completing this project.

Jeff Ainslie, Red Barn Consulting

Tim Beck, Penn State Cooperative Extension

Elizabeth Peifer, Dairy Industry Consultant, Transformation and Profit Team Facilitator

Paul Berdell, Robotic milking startup specialist, Robotic Milking Solutions

Tom Anderson, Robotic dairy business management, Riverland Community College

Dan McFarland, Penn State Extension

Lamar King, Fulton Bank

Gary Heim, Persun & Heim, P.C.

Glenn Horst, Whitehorse Construction

Amos Fisher, Fisher & Thompson

Tim Vossberg, AgPoint Construction



CENTER FOR  
**Dairy**EXCELLENCE

**To learn more, contact the Center for Dairy Excellence**

**2301 North Cameron St., Harrisburg, PA 17110**

**Phone: 717-346-0849 ♦ Fax: 717-705-2342**

**[info@centerfordairyexcellence.org](mailto:info@centerfordairyexcellence.org) ♦ [www.centerfordairyexcellence.org](http://www.centerfordairyexcellence.org)**

**Follow Us on [Facebook](#)**